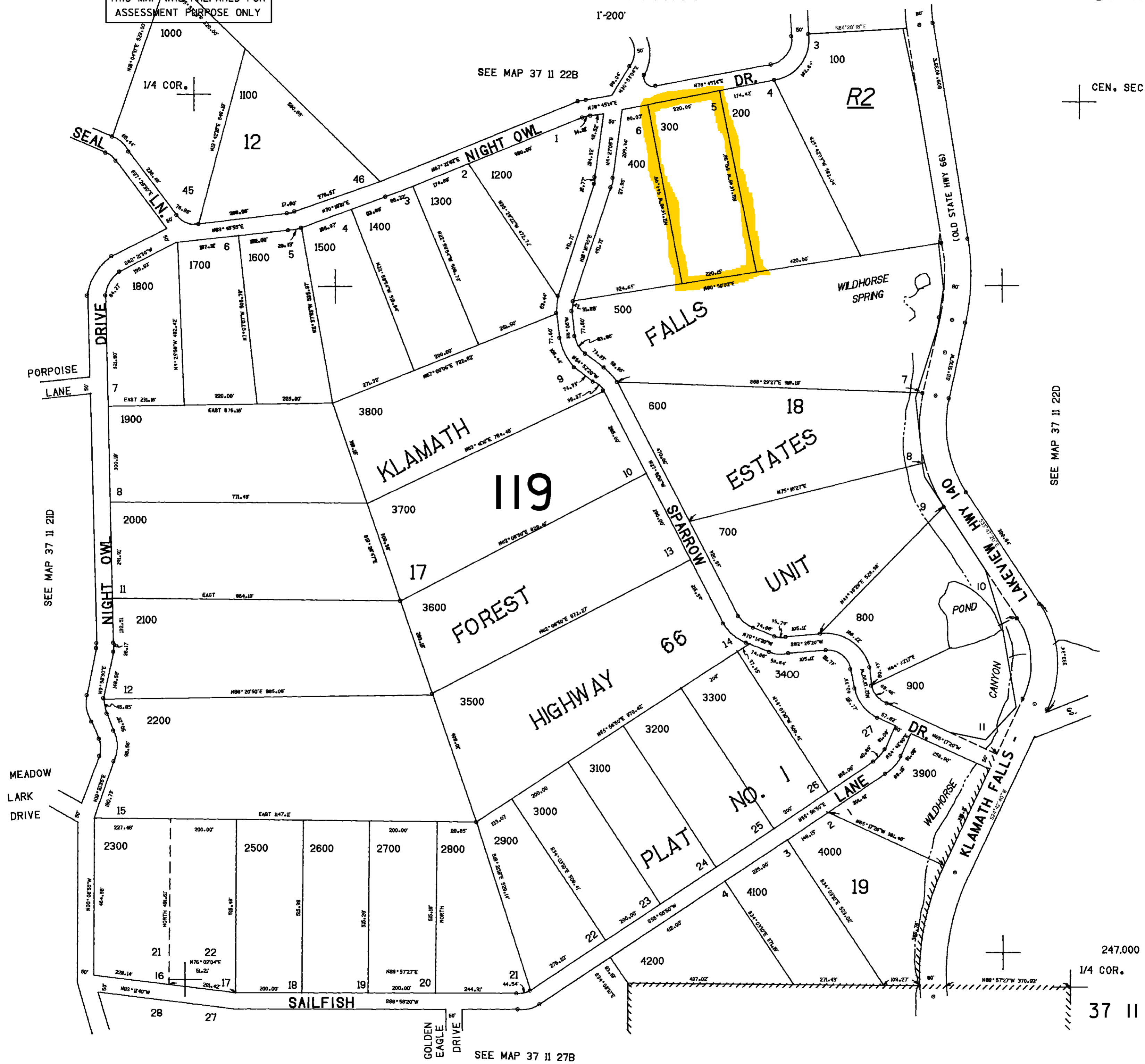


SW1/4 SEC. 22 T.37S. R.11E. W.M.
KLAMATH COUNTY

37 II 22C

REVISED 07-10-13
THIS MAP WAS PREPARED FOR
ASSESSMENT PURPOSE ONLY

1"=200'



SEE MAP 37 II 22B

CEN. SEC.

SEE MAP 37 II 21D

SEE MAP 37 II 22D

SEE MAP 37 II 27B

247.000
1/4 COR.

37 II 22C