

THIS MAP WAS PREPARED FOR
ASSESSMENT PURPOSE ONLY

SE1/4 SEC. 09 T.38S. R.11E. W.M.
KLAMATH COUNTY

38 11 09D

1"-200'

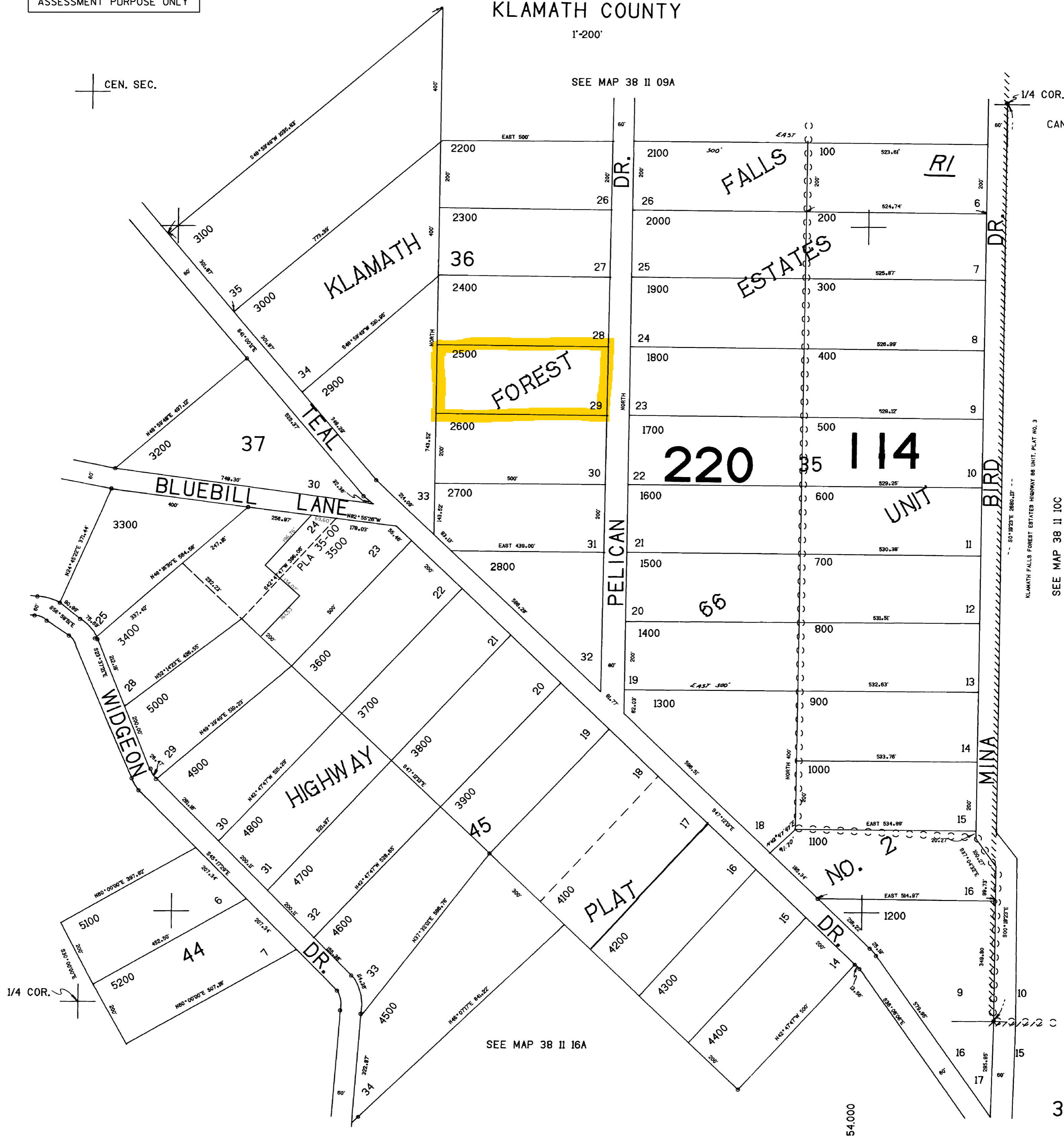
SEE MAP 38 11 09A

CEN. SEC.

1/4 COR.

CANCELLED NO.
4000
3400 U1
3400 U2

SEE MAP 38 11 09C



KLAMATH FALLS FOREST ESTATES HIGHWAY 88 UNIT, PLAT NO. 3

SEE MAP 38 11 10C

226.00'

38 11 09D

54,000